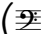



Francesco
Barsanti
(1690 — 1772)

Sonatas for a Flute

Op. I

Bass

( and  clefs)

VistaMareMusica

Sonata I

Francesco Barsanti (1690 — 1772)

Adagio

6

11

15

6 7 6 9 6 7 5 6 # 9 6 7 7 9 6 7 9 6 6

7 6 9 6 6 7 6 6 9 6 6 6 9 6 6 6 #

6 # 6 # 7 5 6 6 # 6 7 6 # 6

6 9 6 6 # 7 5 6 5 6

[Allegro]

7

11

18

22

6 7 6 7 6 7 6 6 6 5 6 5 6 6 # 6 6 # 6 7

6 7 6 7 6 # 6 6 6 5 5 7 6 5

5 7 6 5 4 6 4 6 4 6 4 6 6 5 6 6 6

6 3 6 5 6 3 # 6 5 # 6 6

52

57

65

73

78

85

9 8 6 6 6 7 6 7 9 8 6

9 8 6 6 7 4 6 5 4 6 7 6 7 9 8

6 7 6 7 6 7 9 8 9 8 7 6 7 4 3

6 b5 b4 3 6 5 4 3 6 5

9 8 6 7 4 3 6 b5 7 3

6 5 6 6 6 5 7 6 5 7 9 6 6 7 4 3

Allegro

Measures 1-47 of the first piece, marked Allegro. The score is written for Bass in 3/4 time, key of B-flat major. It features a continuous eighth-note melody with various fingering and articulation markings.

Measures 1-47:

1-6: 6 7 5 7 9 8 6 6 6

7-12: 7 6 9 8 6 9 8 7 6 4 3

13-18: 6 5 4 3 6 5 9 8 6

19-24: 7 4 3 6 9 8 6 7 4 3

25-31: 6 5 6 6 6 6 6 6 7 7 6

32-38: # 6 7 4 3 6 6 7 4 3 6 7 4 3 6 5

39-46: 6 4 3 7 6 6 5 # 6 6

47: 6 4 3 6 7 5 7

Measures 27-43:

27-32: 6 5 6 5 3 6 5 6 6 7 7 7

33-37: 7 7 6 6 6 6 6 6 6 6 6 4 3

38-40: #3 6 #3 6 # 7 6 5 6 5

41-43: 6 6 4 6 6 6 6 6 6

44-50: 6 6 7 6 6 5 6 5 6 6 4 3

Grave

Measures 51-28 of the second piece, marked Grave. The score is written for Bass in 3/4 time, key of B-flat major. It features a slower, more melodic line with various fingering and articulation markings.

Measures 51-59:

51-59: 7 6 5 6 6 5 6 6 6 6 6 7 4 6 7 7 6 5 6 5

60-68: 6 5 6 5 6 5 4 3 6 6 6 6 6 5 3 # 5 6 7 6 5

69-77: #3 4 6 3 4 6 5 7 6 5 3 # 7 6 5

78-86: 6 6 7 6 6 7 6 7 6 7 6 5 6 7 4 3 6 7 4 3

Sonata VI

Francesco Barsanti (1690 — 1772)

Adagio

5

9

13

17

7 6 7 9 8 6 6 6 9 8 7 6 5 4 3

7b6 b4 3 6 4 6 7 6 6 4 3 6 5 6 # 5 4 #3 5

4b3 b5 4 3 65 #3 7 6 # 9 6 6 6 5 6 9 8 b6 6 5

4#3 b5 4 b3 5 4 3 b6 # 6 #

7 6 5 b5 5 5 6 4 3 6 7 7 b6

Non tanto Allegro

5

10

15

6 6 5 6 6 6 5 4 3

7 5 7 6 b5 b3 5

6 6 6 7 6 5 6 b3 6 5 6

5 6 6 7 b3 9 6 b6 6 b3 6 6 5 b3



Sonata II

Francesco Barsanti (1690 — 1772)

Adagio



6 5 4 6 6 7 6 6 #4 6 5 4 6 #4 6 6 #4 6 5 4 6 5 3 6 7

7 4 3 5 6 5 5 6 # 7 6 7 6

7 6 5 6 5 6 7 4 #3 6 # 6 5 6 5 6

b3 #4 6 6 7 b3 6 6 7 4 3

Allegro



6 5 6 6 7 5 6 6 6 6 6

7 6 5 4 3 6 7 5 4 6 7 6 7 6 7 6 7 6 7 6 6 5 #3 6

7 6 6 6 6 5 7 6 6 #3 # 6 5 #3

63



5 6 7 7 7 7 7 7 6 5 6 9 8 7 6 9 8 6 6 6 5

69

Adagio



7 b3 b7 7 7 7 7 7 7 7

Siciliana Largo



7 6 7 6 5 4 3 # 6 6 6

5



5 # 7 5 6 5 6 7 b6 b6 5 #4 6 5

9



4 6 5 b4 b6 5 4 6 5 b3 6 6 5 5 # 6 5 b3

14



6 b5 6 4 6 9 5 4 3 7 6 6 5 4 #3 7 6 6 6 b6 5 #

19



6 6 5 # 7 5 6 5 5 6 6 7 6 6 5 #

Minuet



9



Sempre il mede[si]mo basso
[6 times]

Sonata V

Francesco Barsanti (1690 — 1772)

Adagio

Measures 1-19 of the Adagio section. The notation is in bass clef with a key signature of one flat (B-flat). The tempo is Adagio. Fingerings are indicated by numbers 1-5. Measure numbers 4, 7, 10, 13, 16, and 19 are placed at the start of their respective staves.

[Allegro]

Measures 20-25 of the Allegro section. The notation is in bass clef with a key signature of one flat (B-flat). The tempo is Allegro. Fingerings are indicated by numbers 1-5. Measure numbers 6 and 13 are placed at the start of their respective staves.

34



43



52



60



67



74



84



92



Siciliana Largo

7



13



19



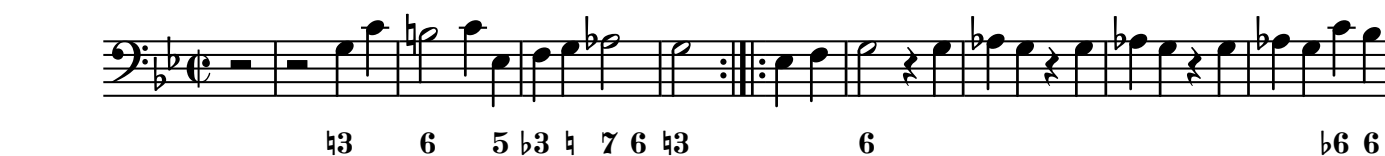
25



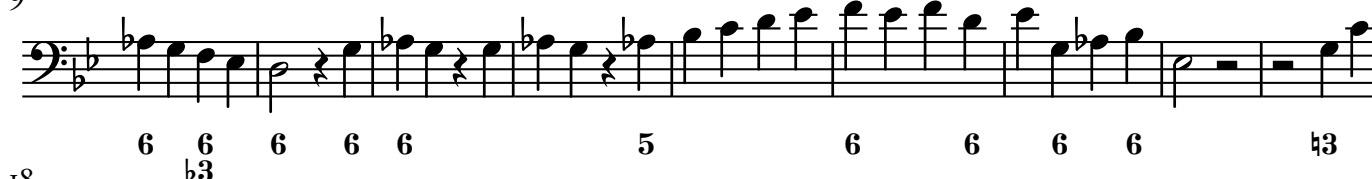
32



Gavotta Allegro



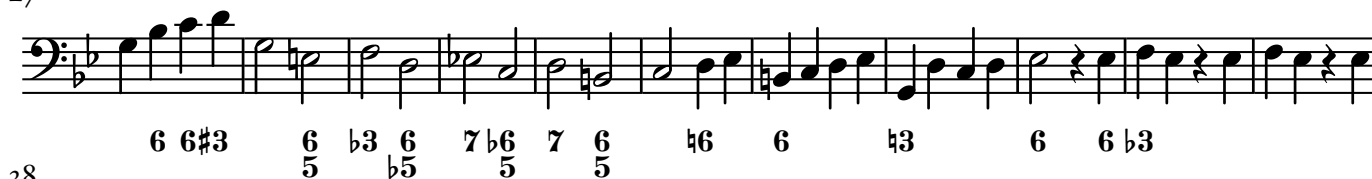
9



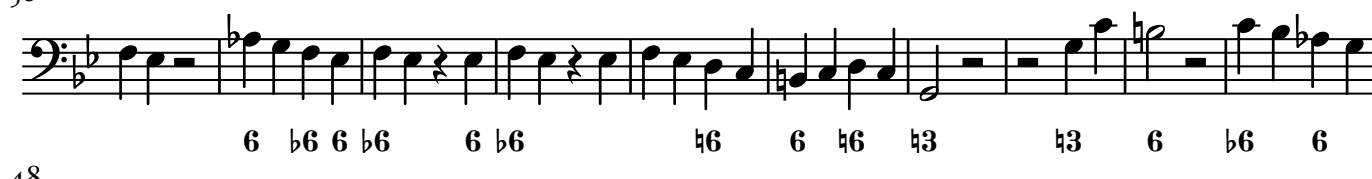
18



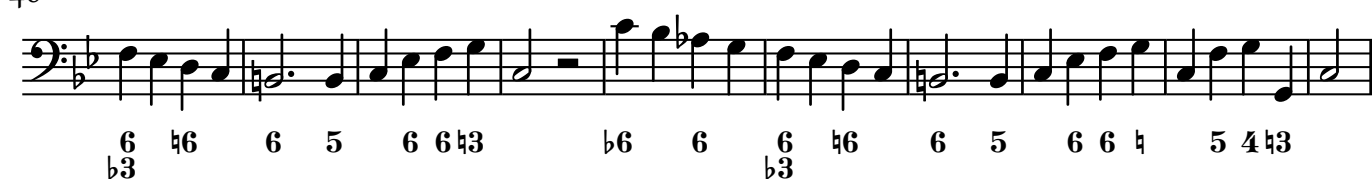
27



38



48



Sonata IV

Francesco Barsanti (1690 — 1772)

Adagio

6 5 4 \natural 3 6 6 \flat 3 7 \flat 6 6 \natural 3 5 7 4 \flat 3

5 \flat 7 \flat 3 5 4 5 7 6 5 6 6 4 3 6 5 5 4 3 \natural 3

9 \flat 6 5 \sharp 3 6 \natural 5 6 4 \sharp 3 5 7 4 \flat 3 \flat 3

13 \natural 3 6 5 6 \flat 3 5 4 3 7 6 7 6 6 5 4 \natural 3 5 4 3

17 \flat 6 5 \natural 3 6 \flat 3 \natural 6 5 6 4 \natural 3 6 7 \natural \natural 3

Con spirito

\natural 3 6 7 5 6 7 5 \flat 5 6 7 \flat 5 \flat 6

9 \flat 7 5 7 6 7 5 6 \flat 3 \natural 3 6 \flat 3 4 \natural 3 6 6 6

18 \flat 3 6 6 7 6 6 7 6 5 6 7 7 6

26 5 6 7 4 2 6 6 6 \flat 3 6 \flat 5 6 6 \flat 5 7 \flat 3

64 5 5 4 3 6 \natural 6 5 \sharp 3 7 6 5 6 \sharp 3 6 \natural 4 \sharp 3 6

74 \sharp 3 6 \sharp 3 6 \flat 5 \flat 7 6 5 5 7 6 5 7 6 \flat 5 5 4 6 2

87 \flat 3 6 4 6 \natural 6 \sharp 4 6 \natural 5 4 6 7 6 5 7 6 5

101 5 7 5 6 6 6 6 6 6 6 6 6 4 3 5 5

Sonata III

Francesco Barsanti (1690 — 1772)

Adagio

\sharp 6 6 \natural 5 \sharp 3 9 8 \flat 6 \flat 7 6 7 \natural \sharp 7 6 \sharp \natural 6


5 6 \flat 7 6 \sharp 6 7 6 \flat 5 7 \flat 6 5 4 3 6 7 4 3 9 8 5

10 4 3 9 8 7 5 \flat 3 \natural 3 4 \sharp 3 5 4 \flat 3 \flat 5


14 \flat 4 3 6 \flat 6 5 \sharp 4 6 7 5 6 4 \sharp 3 9 8 6 \natural 6 6 \flat 6 6 7 4 \sharp 3

Allegro


1




4




9




14



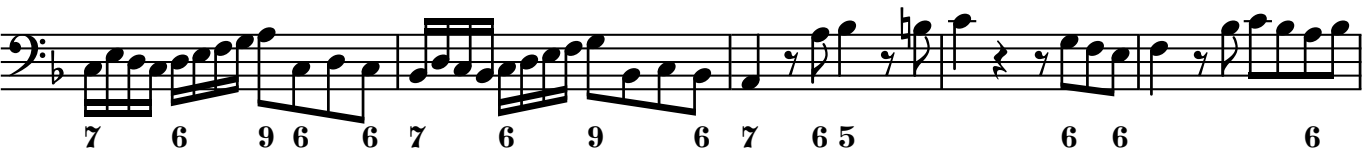
18




23




28



33



38



43



47



Largo



10



20



29



Gavotta



8



Minuet



17

[illegible]

21

A musical notation for the bass line of 'The Sound of Silence'. The notation is on a single staff with a bass clef. It features a series of eighth and sixteenth notes, with some notes beamed together. The key signature has one sharp (F#). The rhythm is indicated by a 6/8 time signature. The notes are: G2, A2, B2, C3, D3, E3, F#3, G3, A3, B3, C4, D4, E4, F#4, G4, A4, B4, C5, D5, E5, F#5, G5, A5, B5, C6, D6, E6, F#6, G6, A6, B6, C7, D7, E7, F#7, G7, A7, B7, C8, D8, E8, F#8, G8, A8, B8, C9, D9, E9, F#9, G9, A9, B9, C10, D10, E10, F#10, G10, A10, B10, C11, D11, E11, F#11, G11, A11, B11, C12, D12, E12, F#12, G12, A12, B12, C13, D13, E13, F#13, G13, A13, B13, C14, D14, E14, F#14, G14, A14, B14, C15, D15, E15, F#15, G15, A15, B15, C16, D16, E16, F#16, G16, A16, B16, C17, D17, E17, F#17, G17, A17, B17, C18, D18, E18, F#18, G18, A18, B18, C19, D19, E19, F#19, G19, A19, B19, C20, D20, E20, F#20, G20, A20, B20, C21, D21, E21, F#21, G21, A21, B21, C22, D22, E22, F#22, G22, A22, B22, C23, D23, E23, F#23, G23, A23, B23, C24, D24, E24, F#24, G24, A24, B24, C25, D25, E25, F#25, G25, A25, B25, C26, D26, E26, F#26, G26, A26, B26, C27, D27, E27, F#27, G27, A27, B27, C28, D28, E28, F#28, G28, A28, B28, C29, D29, E29, F#29, G29, A29, B29, C30, D30, E30, F#30, G30, A30, B30, C31, D31, E31, F#31, G31, A31, B31, C32, D32, E32, F#32, G32, A32, B32, C33, D33, E33, F#33, G33, A33, B33, C34, D34, E34, F#34, G34, A34, B34, C35, D35, E35, F#35, G35, A35, B35, C36, D36, E36, F#36, G36, A36, B36, C37, D37, E37, F#37, G37, A37, B37, C38, D38, E38, F#38, G38, A38, B38, C39, D39, E39, F#39, G39, A39, B39, C40, D40, E40, F#40, G40, A40, B40, C41, D41, E41, F#41, G41, A41, B41, C42, D42, E42, F#42, G42, A42, B42, C43, D43, E43, F#43, G43, A43, B43, C44, D44, E44, F#44, G44, A44, B44, C45, D45, E45, F#45, G45, A45, B45, C46, D46, E46, F#46, G46, A46, B46, C47, D47, E47, F#47, G47, A47, B47, C48, D48, E48, F#48, G48, A48, B48, C49, D49, E49, F#49, G49, A49, B49, C50, D50, E50, F#50, G50, A50, B50, C51, D51, E51, F#51, G51, A51, B51, C52, D52, E52, F#52, G52, A52, B52, C53, D53, E53, F#53, G53, A53, B53, C54, D54, E54, F#54, G54, A54, B54, C55, D55, E55, F#55, G55, A55, B55, C56, D56, E56, F#56, G56, A56, B56, C57, D57, E57, F#57, G57, A57, B57, C58, D58, E58, F#58, G58, A58, B58, C59, D59, E59, F#59, G59, A59, B59, C60, D60, E60, F#60, G60, A60, B60, C61, D61, E61, F#61, G61, A61, B61, C62, D62, E62, F#62, G62, A62, B62, C63, D63, E63, F#63, G63, A63, B63, C64, D64, E64, F#64, G64, A64, B64, C65, D65, E65, F#65, G65, A65, B65, C66, D66, E66, F#66, G66, A66, B66, C67, D67, E67, F#67, G67, A67, B67, C68, D68, E68, F#68, G68, A68, B68, C69, D69, E69, F#69, G69, A69, B69, C70, D70, E70, F#70, G70, A70, B70, C71, D71, E71, F#71, G71, A71, B71, C72, D72, E72, F#72, G72, A72, B72, C73, D73, E73, F#73, G73, A73, B73, C74, D74, E74, F#74, G74, A74, B74, C75, D75, E75, F#75, G75, A75, B75, C76, D76, E76, F#76, G76, A76, B76, C77, D77, E77, F#77, G77, A77, B77, C78, D78, E78, F#78, G78, A78, B78, C79, D79, E79, F#79, G79, A79, B79, C80, D80, E80, F#80, G80, A80, B80, C81, D81, E81, F#81, G81, A81, B81, C82, D82, E82, F#82, G82, A82, B82, C83, D83, E83, F#83, G83, A83, B83, C84, D84, E84, F#84, G84, A84, B84, C85, D85, E85, F#85, G85, A85, B85, C86, D86, E86, F#86, G86, A86, B86, C87, D87, E87, F#87, G87, A87, B87, C88, D88, E88, F#88, G88, A88, B88, C89, D89, E89, F#89, G89, A89, B89, C90, D90, E90, F#90, G90, A90, B90, C91, D91, E91, F#91, G91, A91, B91, C92, D92, E92, F#92, G92, A92, B92, C93, D93, E93, F#93, G93, A93, B93, C94, D94, E94, F#94, G94, A94, B94, C95, D95, E95, F#95, G95, A95, B95, C96, D96, E96, F#96, G96, A96, B96, C97, D97, E97, F#97, G97, A97, B97, C98, D98, E98, F#98, G98, A98, B98, C99, D99, E99, F#99, G99, A99, B99, C100, D100, E100, F#100, G100, A100, B100, C101, D101, E101, F#101, G101, A101, B101, C102, D102, E102, F#102, G102, A102, B102, C103, D103, E103, F#103, G103, A103, B103, C104, D104, E104, F#104, G104, A104, B104, C105, D105, E105, F#105, G105, A105, B105, C106, D106, E106, F#106, G106, A106, B106, C107, D107, E107, F#107, G107, A107, B107, C108, D108, E108, F#108, G108, A108, B108, C109, D109, E109, F#109, G109, A109, B109, C110, D110, E110, F#110, G110, A110, B110, C111, D111, E111, F#111, G111, A111, B111, C112, D112, E112, F#112, G112, A112, B112, C113, D113, E113, F#113, G113, A113, B113, C114, D114, E114, F#114, G114, A114, B114, C115, D115, E115, F#115, G115, A115, B115, C116, D116, E116, F#116, G116, A116, B116, C117, D117, E117, F#117, G117, A117, B117, C118, D118, E118, F#118, G118, A118, B118, C119, D119, E119, F#119, G119, A119, B119, C120, D120, E120, F#120, G120, A120, B120, C121, D121, E121, F#121, G121, A121, B121, C122, D122, E122, F#122, G122, A122, B122, C123, D123, E123, F#123, G123, A123, B123, C124, D124, E124, F#124, G124, A124, B124, C125, D125, E125, F#125, G125, A125, B125, C126, D126, E126, F#126, G126, A126, B126, C127, D127, E127, F#127, G127, A127, B127, C128, D128, E128, F#128, G128, A128, B128, C129, D129, E129, F#129, G129, A129, B129, C130, D130, E130, F#130, G130, A130, B130, C131, D131, E131, F#131, G131, A131, B131, C132, D132, E132, F#132, G132, A132, B132, C133, D133, E133, F#133, G133, A133, B133, C134, D

25

[illegible]

30

The bass staff of the musical score for "The Rose Tree" is shown. It contains the following notes and fingerings: G4 (6), A4 (6), Bb4, C5, D5, E5, F#5, G5 (7), A5 (5), Bb5, C6, D6, E6, F#6, G6 (6), A6 (7), Bb6, C7, D7, E7, F#7, G7 (6).

34

Musical notation for the bass line of "The Rose Tree". The melody is written on a single staff in bass clef. It consists of three measures, each containing six notes. The notes are: G2 (quarter), F2 (quarter), E2 (quarter), D#2 (quarter), C#2 (quarter), and B1 (half). The first measure has a whole rest above it. The second measure has a whole rest above it. The third measure has a whole rest above it.

38

42

The bass line is written on a single staff in bass clef. It begins with a 6/6 time signature. The melody consists of eighth and sixteenth notes, with some rests. The key signature has one flat (B-flat). The notation includes various musical symbols such as beams, slurs, and accidentals.

46

Musical notation for the bass line of "The Rose Tree". The key signature has one sharp (F#). The melody consists of eighth notes and quarter notes. Below the staff are fingerings: 6, 5, 7 6 6 5 4 3, 7 6 7 6 7 6, 7 6 5, and 6.

51

Musical notation for the bass line of 'The Rose Tree'. The notation is on a single staff with a bass clef. It consists of five measures. The notes are: Measure 1: G2, A2, B2, C3, D3, E3, F3, G3, A3, B3, C4, D4, E4, F4, G4, A4, B4, C5, D5, E5, F5, G5, A5, B5, C6, D6, E6, F6, G6, A6, B6, C7, D7, E7, F7, G7, A7, B7, C8, D8, E8, F8, G8, A8, B8, C9, D9, E9, F9, G9, A9, B9, C10, D10, E10, F10, G10, A10, B10, C11, D11, E11, F11, G11, A11, B11, C12, D12, E12, F12, G12, A12, B12, C13, D13, E13, F13, G13, A13, B13, C14, D14, E14, F14, G14, A14, B14, C15, D15, E15, F15, G15, A15, B15, C16, D16, E16, F16, G16, A16, B16, C17, D17, E17, F17, G17, A17, B17, C18, D18, E18, F18, G18, A18, B18, C19, D19, E19, F19, G19, A19, B19, C20, D20, E20, F20, G20, A20, B20, C21, D21, E21, F21, G21, A21, B21, C22, D22, E22, F22, G22, A22, B22, C23, D23, E23, F23, G23, A23, B23, C24, D24, E24, F24, G24, A24, B24, C25, D25, E25, F25, G25, A25, B25, C26, D26, E26, F26, G26, A26, B26, C27, D27, E27, F27, G27, A27, B27, C28, D28, E28, F28, G28, A28, B28, C29, D29, E29, F29, G29, A29, B29, C30, D30, E30, F30, G30, A30, B30, C31, D31, E31, F31, G31, A31, B31, C32, D32, E32, F32, G32, A32, B32, C33, D33, E33, F33, G33, A33, B33, C34, D34, E34, F34, G34, A34, B34, C35, D35, E35, F35, G35, A35, B35, C36, D36, E36, F36, G36, A36, B36, C37, D37, E37, F37, G37, A37, B37, C38, D38, E38, F38, G38, A38, B38, C39, D39, E39, F39, G39, A39, B39, C40, D40, E40, F40, G40, A40, B40, C41, D41, E41, F41, G41, A41, B41, C42, D42, E42, F42, G42, A42, B42, C43, D43, E43, F43, G43, A43, B43, C44, D44, E44, F44, G44, A44, B44, C45, D45, E45, F45, G45, A45, B45, C46, D46, E46, F46, G46, A46, B46, C47, D47, E47, F47, G47, A47, B47, C48, D48, E48, F48, G48, A48, B48, C49, D49, E49, F49, G49, A49, B49, C50, D50, E50, F50, G50, A50, B50, C51, D51, E51, F51, G51, A51, B51, C52, D52, E52, F52, G52, A52, B52, C53, D53, E53, F53, G53, A53, B53, C54, D54, E54, F54, G54, A54, B54, C55, D55, E55, F55, G55, A55, B55, C56, D56, E56, F56, G56, A56, B56, C57, D57, E57, F57, G57, A57, B57, C58, D58, E58, F58, G58, A58, B58, C59, D59, E59, F59, G59, A59, B59, C60, D60, E60, F60, G60, A60, B60, C61, D61, E61, F61, G61, A61, B61, C62, D62, E62, F62, G62, A62, B62, C63, D63, E63, F63, G63, A63, B63, C64, D64, E64, F64, G64, A64, B64, C65, D65, E65, F65, G65, A65, B65, C66, D66, E66, F66, G66, A66, B66, C67, D67, E67, F67, G67, A67, B67, C68, D68, E68, F68, G68, A68, B68, C69, D69, E69, F69, G69, A69, B69, C70, D70, E70, F70, G70, A70, B70, C71, D71, E71, F71, G71, A71, B71, C72, D72, E72, F72, G72, A72, B72, C73, D73, E73, F73, G73, A73, B73, C74, D74, E74, F74, G74, A74, B74, C75, D75, E75, F75, G75, A75, B75, C76, D76, E76, F76, G76, A76, B76, C77, D77, E77, F77, G77, A77, B77, C78, D78, E78, F78, G78, A78, B78, C79, D79, E79, F79, G79, A79, B79, C80, D80, E80, F80, G80, A80, B80, C81, D81, E81, F81, G81, A81, B81, C82, D82, E82, F82, G82, A82, B82, C83, D83, E83, F83, G83, A83, B83, C84, D84, E84, F84, G84, A84, B84, C85, D85, E85, F85, G85, A85, B85, C86, D86, E86, F86, G86, A86, B86, C87, D87, E87, F87, G87, A87, B87, C88, D88, E88, F88, G88, A88, B88, C89, D89, E89, F89, G89, A89, B89, C90, D90, E90, F90, G90, A90, B90, C91, D91, E91, F91, G91, A91, B91, C92, D92, E92, F92, G92, A92, B92, C93, D93, E93, F93, G93, A93, B93, C94, D94, E94, F94, G94, A94, B94, C95, D95, E95, F95, G95, A95, B95, C96, D96, E96, F96, G96, A96, B96, C97, D97, E97, F97, G97, A97, B97, C98, D98, E98, F98, G98, A98, B98, C99, D99, E99, F99, G99, A99, B99, C100, D100, E100, F100, G100, A100, B100, C101, D101, E101, F101, G101, A101, B101, C102, D102, E102, F102, G102, A102, B102, C103, D103, E103, F103, G103, A103, B103, C104, D104, E104, F104, G104, A104, B104, C105, D105, E105, F105, G105, A105, B105, C106, D106, E106, F106, G106, A106, B106, C107, D107, E107, F107, G107, A107, B107, C108, D108, E108, F108, G108, A108, B108, C109, D109, E109, F109, G109, A109, B109, C110, D110, E110, F110, G110, A110, B110, C111, D111, E111, F111, G111, A111, B111, C112, D112, E112, F112, G112, A112, B112, C113, D113, E113, F113, G113, A113, B113, C114, D114, E114, F114, G114, A114, B114, C115, D115, E115, F115, G115, A115, B115, C116, D116, E116, F116, G116, A116, B116, C117, D117, E117, F117, G117, A117, B117, C118, D118, E118, F118, G118, A118, B118, C119, D119, E119, F119, G119, A119, B119, C120, D120, E120, F120, G120, A120, B120, C121, D121, E121, F121, G121, A121, B121, C122, D122, E122, F122, G122, A122, B122, C123, D123, E123, F123, G123, A123, B123, C124, D124, E124, F124, G124, A124, B124, C125, D125, E125, F125, G125, A125, B125, C126, D126, E126, F126, G126, A126, B126, C127, D127, E127, F127, G127, A127, B127, C128, D128, E128, F128, G128, A128, B128, C129, D129, E129, F129, G129, A129, B129, C130, D130, E130, F130, G130, A130, B130, C131, D131, E131, F131, G131, A131, B131, C132, D132, E132, F132, G132, A132, B132, C133, D133, E133, F133, G133, A133, B133, C134, D134, E134, F134, G134, A134, B134, C135, D135, E135, F135, G135, A135, B135, C136, D136, E136, F136, G136, A136, B136, C137, D137, E137, F137, G137, A137, B137, C138, D138, E138, F138, G138, A138

Largo

5

II

17

23

6 5 7 6 # 7 6 7 6 5

7 6 6 5 7 7 # 6 6 4

6 4 #3 #2 6 #3 6 #3 4 2 6 6

4 6 6 6 6 5 3 6 4 5 6 4 #3 6

6 4 5 4 5 4 5 #4 6 6 5 #3

Presto

12

23

37

49

6 6 6 6 4 6 6 5 6 b3 6

6 6 6 6 6 6 6

4 3 7 6 6 7 6 6 7 6 6 6 6 4 3 b5 b7 6 5 b3 # 5 7 6 5

5 7 6 5 5 # 6 #3 6 5 6 4 #3 6 4 3 6

4 3 6 5 4 3 7 6 5 7 6 5 # 6 6 6 6 #3

A3 Printing Instructions

The A3 versions of the pdf files are intended to be printed in a booklet format (several double-size sections folded in the middle) on A3 paper; when necessary, page turnings are minimized by the use of fold-outs.

To print in booklet format on double-sized paper using Adobe Acrobat Reader™ (other PDF readers usually have equivalent commands):

1. Load double-sized (typically A3) or single-sized (typically A4) in your printer according to each range size.
2. In Acrobat Reader™ print dialogue box, under “Page Sizing & Handling”, select “Size” and under “Size Options”, select “Actual Size”.
3. Under “Page Setup...”, select “A3 297 x 420 mm” or “A4 210 x 297 mm” according to the size of each range.
4. Print each of the page ranges listed below (recto and verso).

This generates some sections to fold in the middle (and bind together, if you like).

Hint: if your printer does not have double-side printing capability (recto and verso in a single run), print each range twice: once selecting “Front side only” (or “Odd sheets”) and printing on one side, then selecting “Back side only” (or “Even sheets”), reloading the printed pages on the other side and printing the same range of pages again.

Page Ranges

(all numbers refer to positions in the file, not to numbers printed on the pages)

Section	Paper Size	Page Range
Bass	A3	1—10 (5 sheets)
Fold-outs	A4	11—12 (1 sheet)

Glueing

(all page numbers refer to the numbers printed on the pages)

Glue page no.:	to page no.:
8	13